

# Brainshark URL Parameters

Parameters can be added to Brainshark presentation URLs for various reasons. This document identifies the various parameters that are available and the result of using each one.

## Instructions

Appending parameters to a Brainshark URL are preceded by an ampersand “&” unless the URL contains an alias (new address), in which case, it’s preceded by a question mark “?”. Multiple parameters must be separated by an ampersand (&).

## URL String Examples

Standard Brainshark URL 1: [www.brainshark.com/companyname/vu?pi=123456789&dm=1](http://www.brainshark.com/companyname/vu?pi=123456789&dm=1)

Custom Brainshark URL 2: [www.brainshark.com/companyname/custom\\_name?dm=1&sld=3](http://www.brainshark.com/companyname/custom_name?dm=1&sld=3)

## Parameter Table

Parameter	Result
<b>dm=1</b>	Maximum view
<b>tb=0</b>	Toggle button disabled (Toggles from standard view to maximum view)
<b>tb=1</b>	Toggle button enabled
<b>pt=s</b>	Default using Windows Media Player
<b>pt=fp</b>	Default using telephone playback
<b>pt=f2</b>	Default using Flash Player
<b>tx=</b>	Addition of tracking code (text appearing after “=” will appear in reports)
<b>tx=preview</b>	Distinguishes previews and allows to filter view from reporting
<b>r=email@address.com</b>	Forces view receipt to email address other than email address specified in presentation properties tab. In order for this to work, viewing receipts for the presentation must be on and the admin setting, ‘enable email receipts on URL’ must be set to ‘Yes.’
<b>bg=&lt;hex#&gt;</b>	Sets the viewer background color to the hex# specified
<b>Pbg=&lt;hex#&gt;</b>	Sets the pre-loader background color to the hex# specified
<b>Pause=1</b>	Defaults presentation to start in pause mode (viewer must click play)
<b>Sld=(slide#)</b>	Defaults presentation to start playing at a specific slide
<b>Splash=1</b>	Provides an image of the first slide of the presentation with an embedded play button. (Must be used with a standard Brainshark URL)

## Examples

### 1. Maximum View

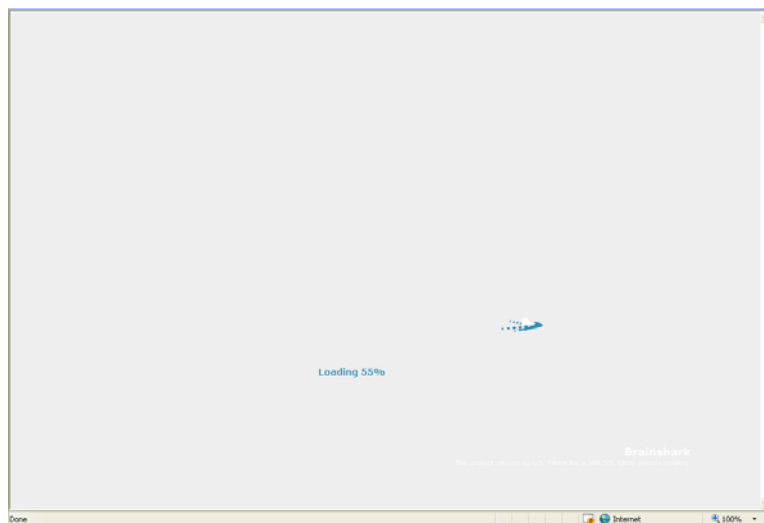
- a. [http://www.brainshark.com/documentation/Best\\_Author?dm=1](http://www.brainshark.com/documentation/Best_Author?dm=1)



Hides the  
table of contents

### 2. Pre-loader Background

- a. [http://www.brainshark.com/documentation/Best\\_Author?pbg=EEEEEE](http://www.brainshark.com/documentation/Best_Author?pbg=EEEEEE)



Matches your  
website color  
scheme

### 3. Splash Image

- a. <http://www.brainshark.com/brainsharkinc/vu?pi=723743132&splash=1>



Great for email marketing

Link can be embedded in the image